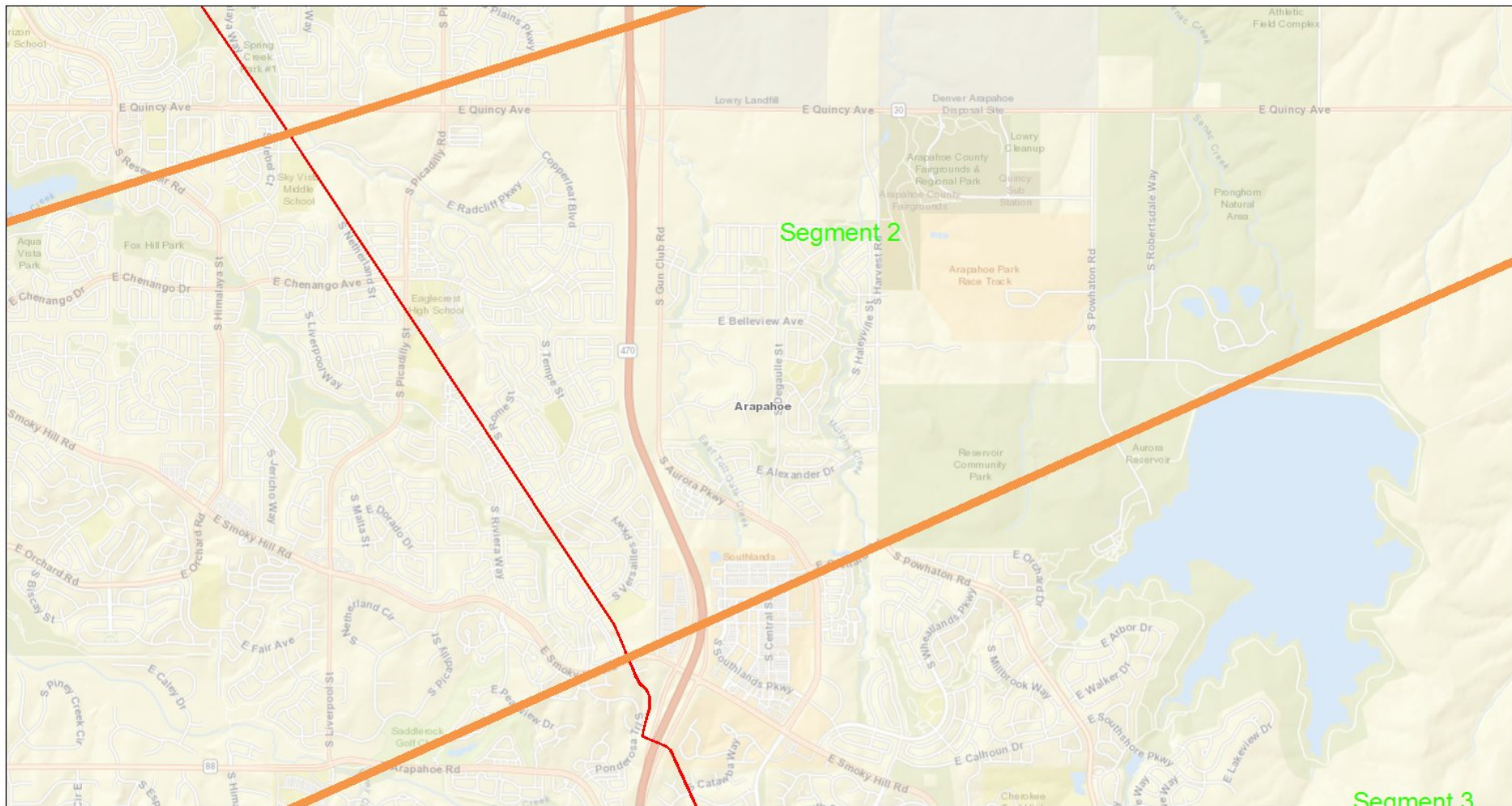


# Phillips 66 Pipeline

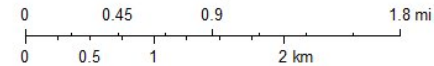


9/28/2020, 8:46:45 AM

### PIPELINES

- ACTIVE
- IDLED/IN-SERVICE
- IDLED/OUT OF SERVICE
- Counties

1:36,112



Sources: Esri, HERE, Garmin, USGS, Intermap, INCREMENT P, NRCan, Esri Japan, METI, Esri China (Hong Kong), Esri Korea, Esri (Thailand), NGCC, (c) OpenStreetMap contributors, and the GIS User Community  
 Contact Mapping Group for more information

Phillips 66 Pipeline