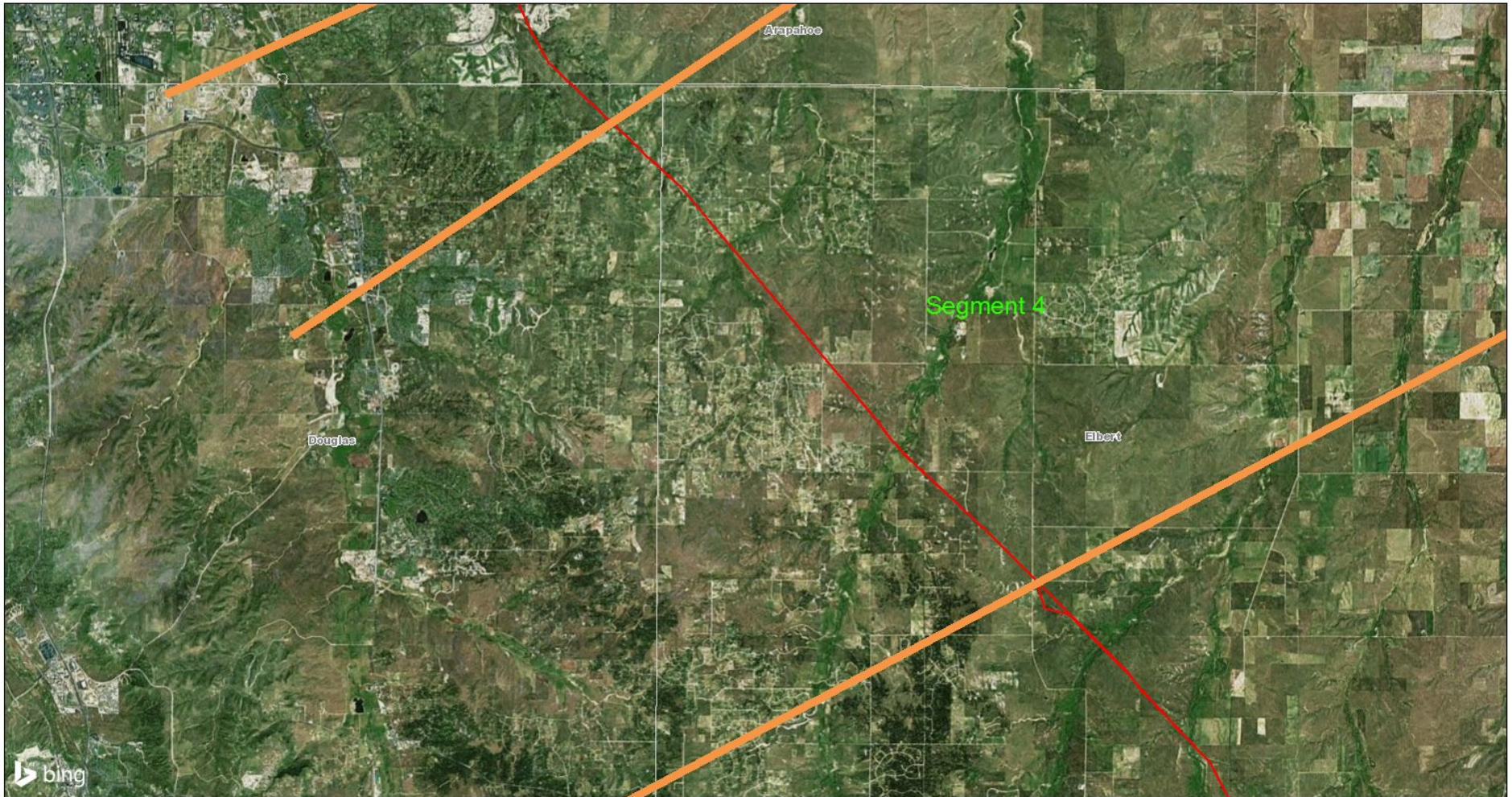


Phillips 66 Pipeline

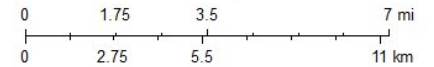


9/14/2020, 3:24:16 PM

PIPELINES

- ACTIVE
- IDLED/IN-SERVICE
- IDLED/OUT OF SERVICE
- Counties

1:144,448



Contact Mapping Group for more information
Contact Mapping for questions about this data
© 2020 Microsoft Corporation Earthstar Geographics SIO
Source: USGS; NOAA; and the GIS Community
Source: USGS, EPA

Phillips 66 Pipeline